



**2020 NBYA FALL REGATTA
SEPTEMBER 26, 2020
SAILING INSTRUCTIONS**

Host Club: East Greenwich Yacht Club Race VHF Channel 69

1. RULES

- a. The regatta will be governed by the rules as defined in The Racing Rules of Sailing.

2. NOTICES TO COMPETITORS

- a. Notices to competitors will be posted on the Yacht Scoring web site. NBYA will attempt to email courtesy notices to all registered competitors

3. CHANGES TO THE SAILING INSTRUCTIONS

- a. Any change to the sailing instructions or to the schedule of races will be posted by 1800 on September 25.

4. SIGNALS MADE ASHORE

- a. Signals ashore will be flown from the main flagpole at EGYC
- b. When AP is displayed ashore, '1 minute' is replaced with 'not less than 1 hour' in the race signal AP.
- c. The race committee will try to also announce any postponement on the race channel

5. SCHEDULE OF RACES

- a. The scheduled time of the 1st warning is 1200. Multiple races are planned.
- b. All racers are invited to come back to EGYC after the racing for drinks and socializing. Please check in with the dock office prior to proceeding up to the club, and maintain social distancing and mask wearing when not seated at a table.

6. CLASS FLAG

- a. The class flags will be a blue flag for large spinnaker, a white flag for small spinnaker and a red flag for non-spinnaker.
- b. Starting sequence for the first race will be in the order listed in section 6a., Starting sequences for any subsequent races will be announced.

7. RACING AREAS

- a. Vicinity of Pine Hill Point

8. CHECK-IN

- a. All boats shall check in by sailing by the race committee signal boat and hail her sail number. You will receive a goodie bag in return!

9. COURSES

- a. The course will be around inflatable marks. Courses are shown in Addendum A. If
- b. No later than 10 minutes before the warning signal, the race committee boat will display the course and announce it on the radio.

10. MARKS: Orange inflatables for marks. Pin end of the start line will be a yellow mark. Offset mark, if used will be a yellow mark.

11. THE START

- a. Races will be started using rule 26.
- b. The starting line will be between a staff or halyard displaying an orange flag on the signal boat and the nearby drop mark.

12. SHORTENING THE COURSE

a. The race committee may shorten the course at any mark of the course by being on station, sounding a horn and announcing the change on the race VHF channel before the first competitor arrives.

13. THE FINISH

- a. The finishing line will be between a staff or halyard displaying an orange flag on a race committee boat and the nearby mark used at the start.

14. PENALTIES AT THE TIME OF THE INCIDENT

- a. Rules 44.1 and 44.2 are changed so that infringements of a rule of Part 2, only one turn, including one tack and one gybe, is required.

15. PROTESTS and REQUESTS FOR REDRESS

- a. The time limit for filing protests is three hours after the race committee boat docks .
- b. Competitors must notify the committee boat of their intent to protest as soon as possible after finishing.
- c. Protests may be left at EGYC or sent electronically to egycracing@gmail.com
- d. Protest will be scheduled electronically at a time and date that suits those involved.

16. SCORING

- a. The low point scoring system, Appendix A will apply. One (1) race is required to constitute a regatta.
- b. There will be no throw-out.

17. SAFETY

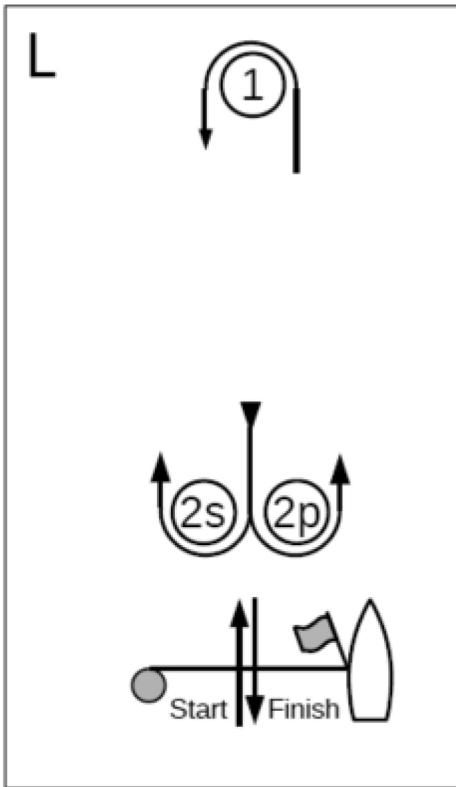
- a. A boat that retires from a race shall notify the race committee as soon as possible.
- b. The race committee VHF channel will be Ch. 69
- c. Competitors are reminder that Narragansett Bay contains restricted and deep draft navigation channels and that sailing vessels do NOT have right-of-way over vessels under power that may be restricted in their ability to maneuver. Participation in the regatta does NOT provide standing over vessels that have right of way.

18. DISCLAIMER OF LIABILITY and MEDIA RELEASE

- a. Competitors participate in the regatta entirely at their own risk. See rule 4, Decision to Race. The organizing authority and committee will not accept any liability for material damage, personal injury or death sustained in conjunction with, prior to, or after the regatta.

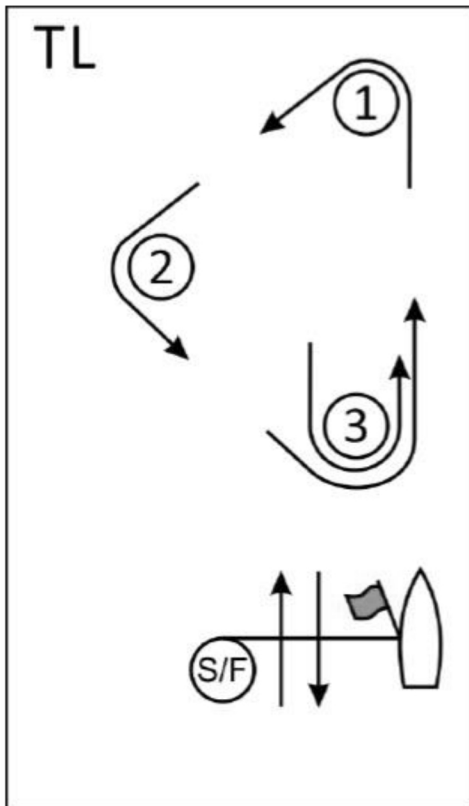
ADDENDUM A

Inflatable / Dropped Mark Courses



COURSE L - WINDWARD / LEWARD	
Signal	Mark Rounding Order
L1	Start - 1 - Finish
L2	Start - 1 - 2S/2P* - 1 - Finish
L3	Start - 1 - 2S/2P* - 1 - 2S/2P* - 1 - Finish
L4	Start - 1 - 2S/2P* - 1 - 2S/2P* - 1 - 2S/2P* - 1 - Finish
GATE (SPECIAL NOTE)	
2S/2P*	If there is only one mark #2 in the location of the gate Leeward Mark is to be left to PORT .

RC will announce if there is an offset mark near the windward mark. If there is, it must be left to port at each rounding.



COURSE T - TRIANGLE	
Signal	Mark Rounding Order
T1	Start - 1 - 2 - Finish
T2	Start - 1 - 2 - 3 - 1 - Finish
T3	Start - 1 - 2 - 3 - 1 - 3 - 1 - Finish
T4	Start - 1 - 2 - 3 - 1 - 3 - 1 - 3 - 1 - Finish